

Appendix K – Underground Street Light Cable Map

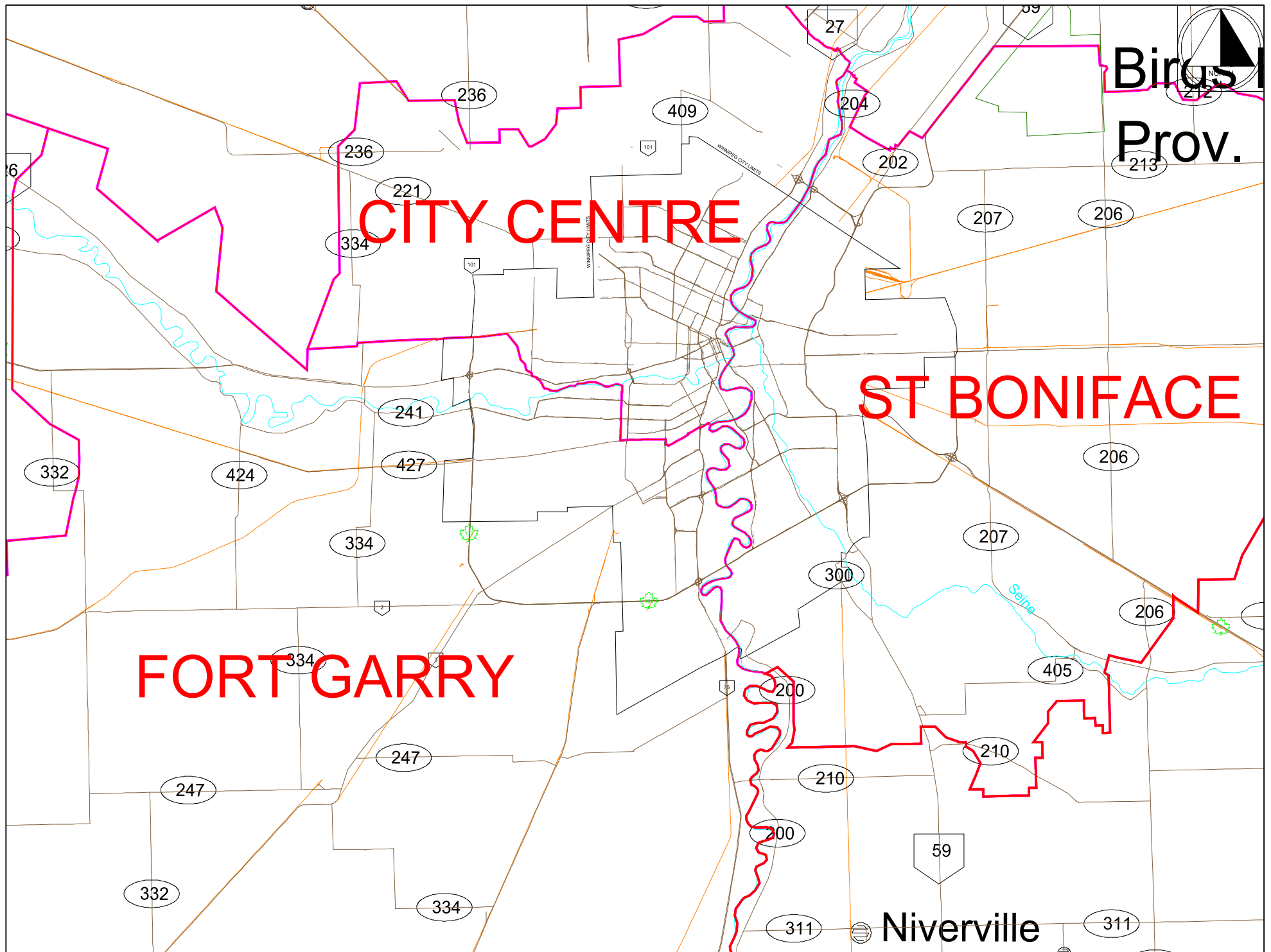


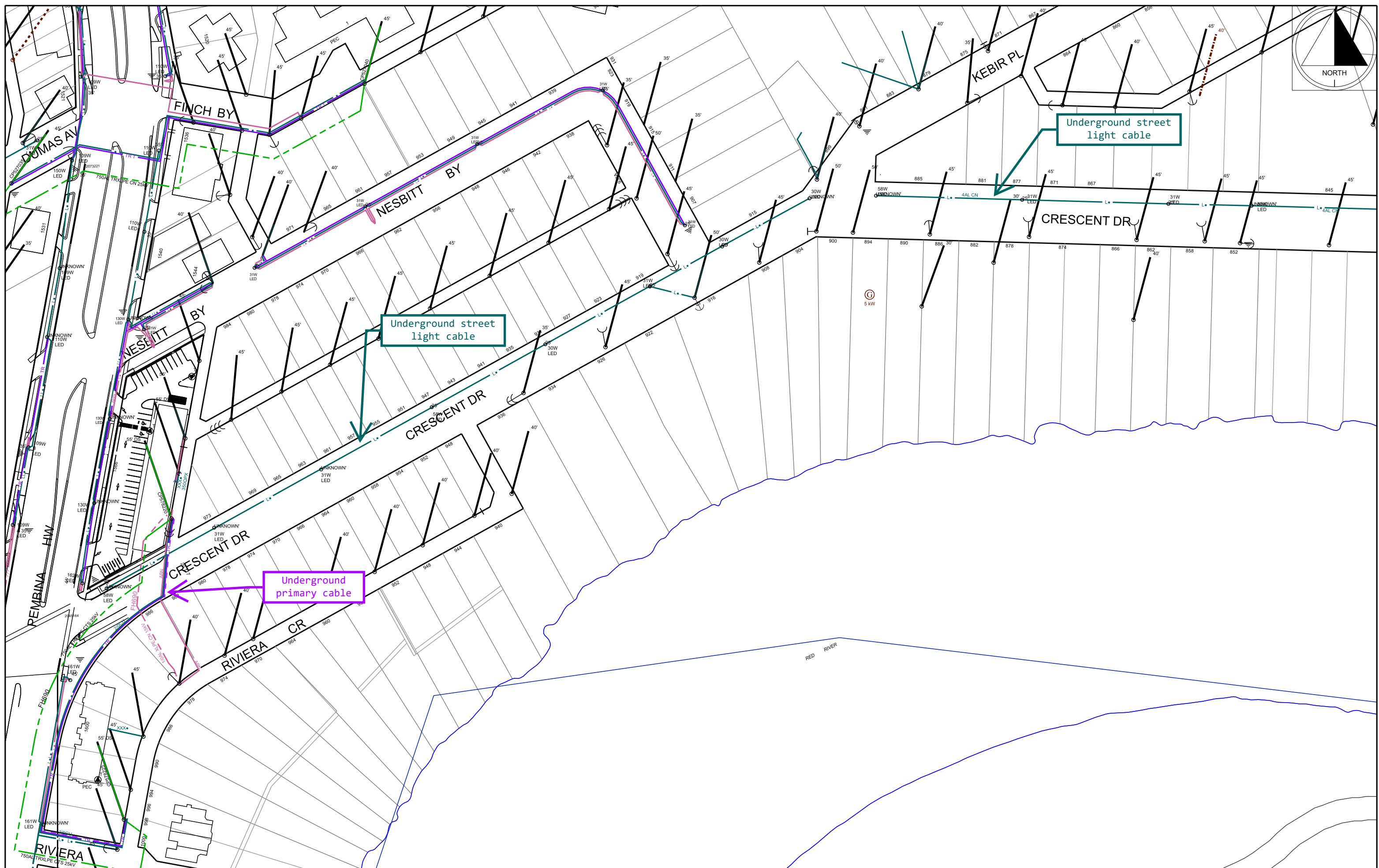
Table 1
Minimum depth of burial of cables and duct and chamber systems
 (See Clauses 5.1.2, 5.1.3 and 5.2.)

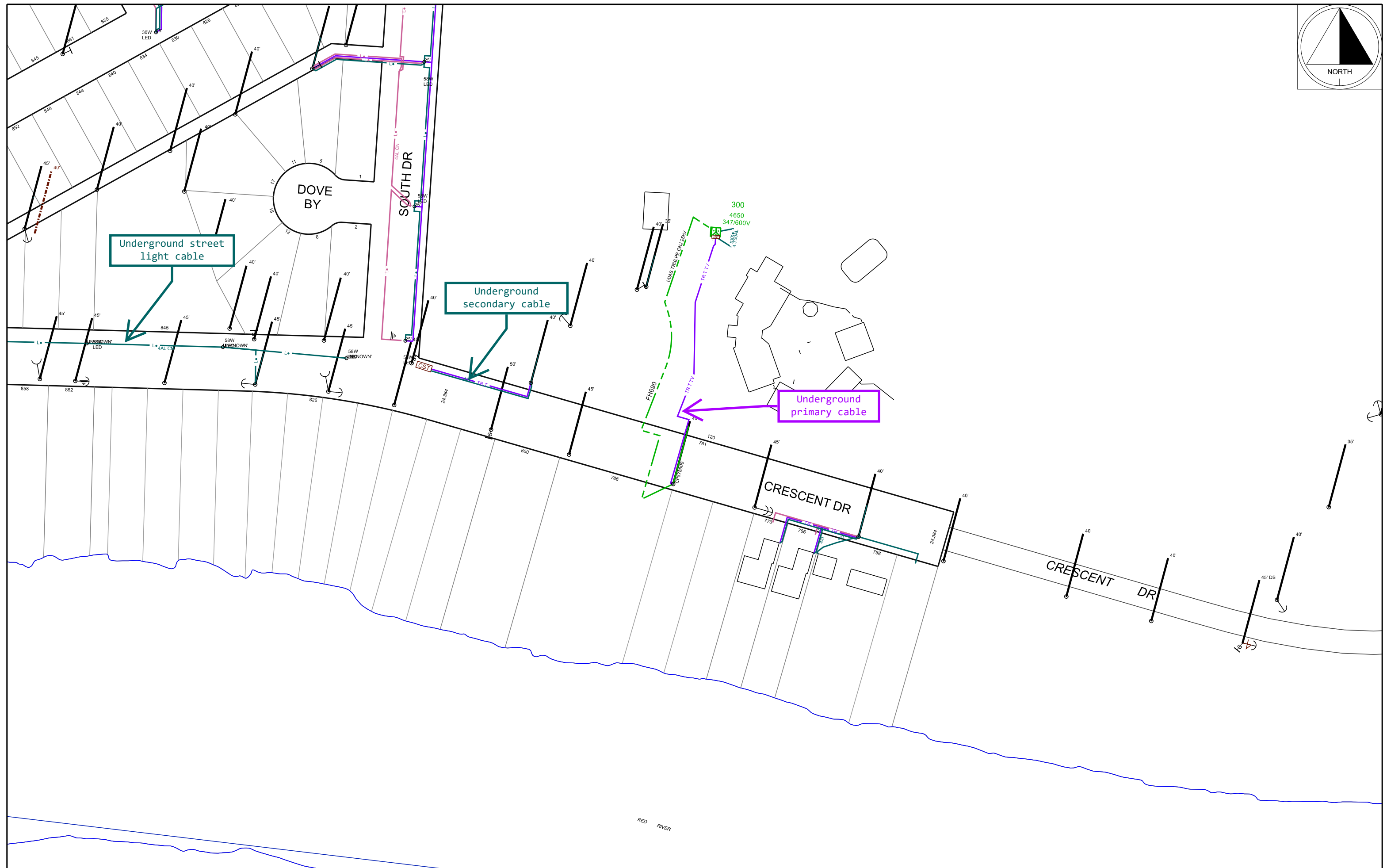
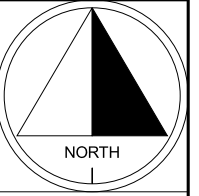
Type of system	Depth of burial, mm			
	Surface of the earth	Bottom of ditches	Under parkways or lawns	Under roadways
Communication cables	600*	750*	450*	600*
Communication drops	450*	600*	450*	450*
Supply cables >750 V	750*‡	1000*‡	750*‡	1000*‡
Supply cables ≤750 V	600*‡	750*‡	600*‡	1000*‡
Duct and subsurface chamber system	450†	600†	450†	600†

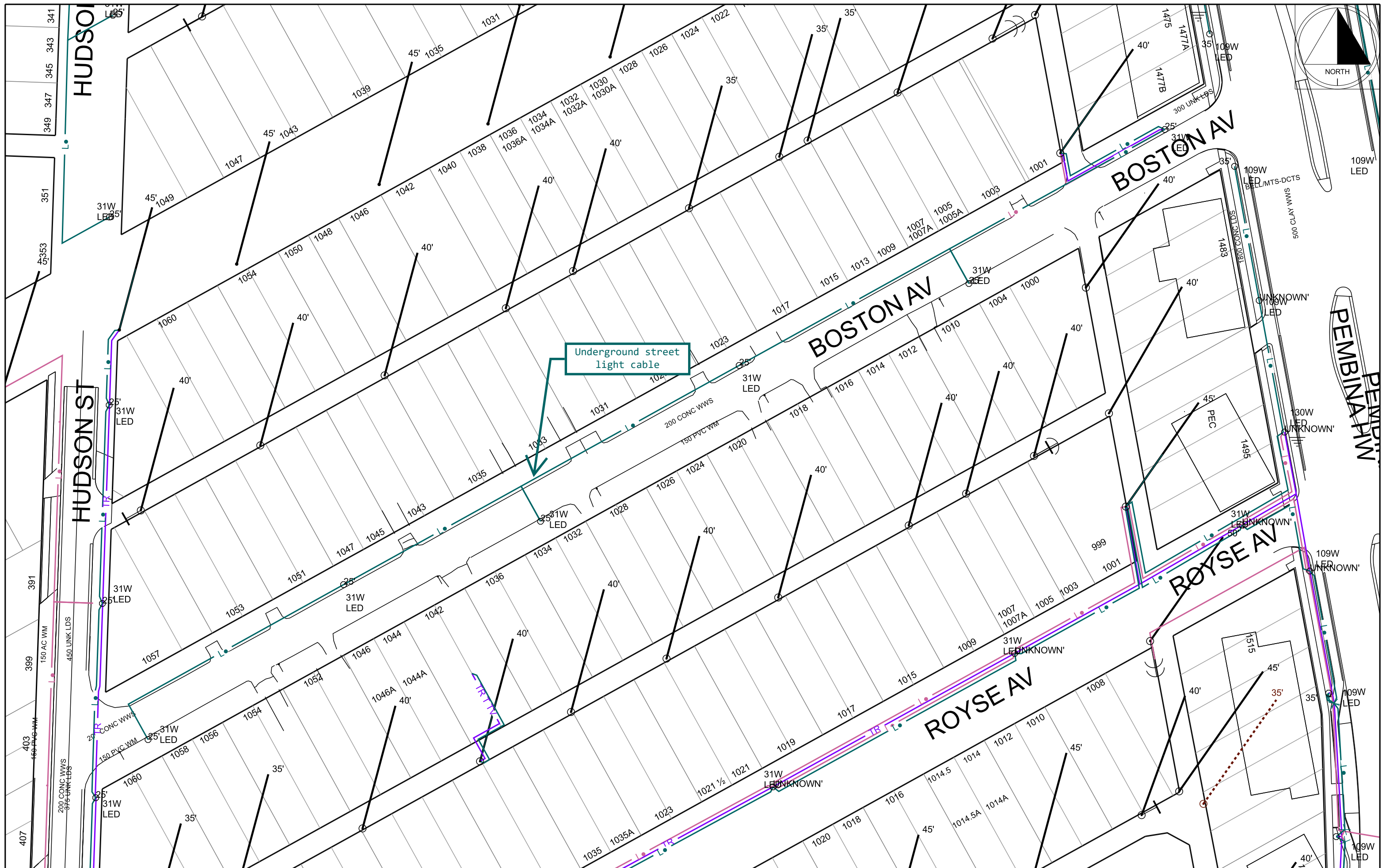
* See Clause 5.1.4 for reduced depth of burial at cable crossings and Clause 5.1.5 where these values are not practical.

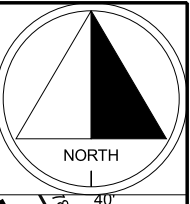
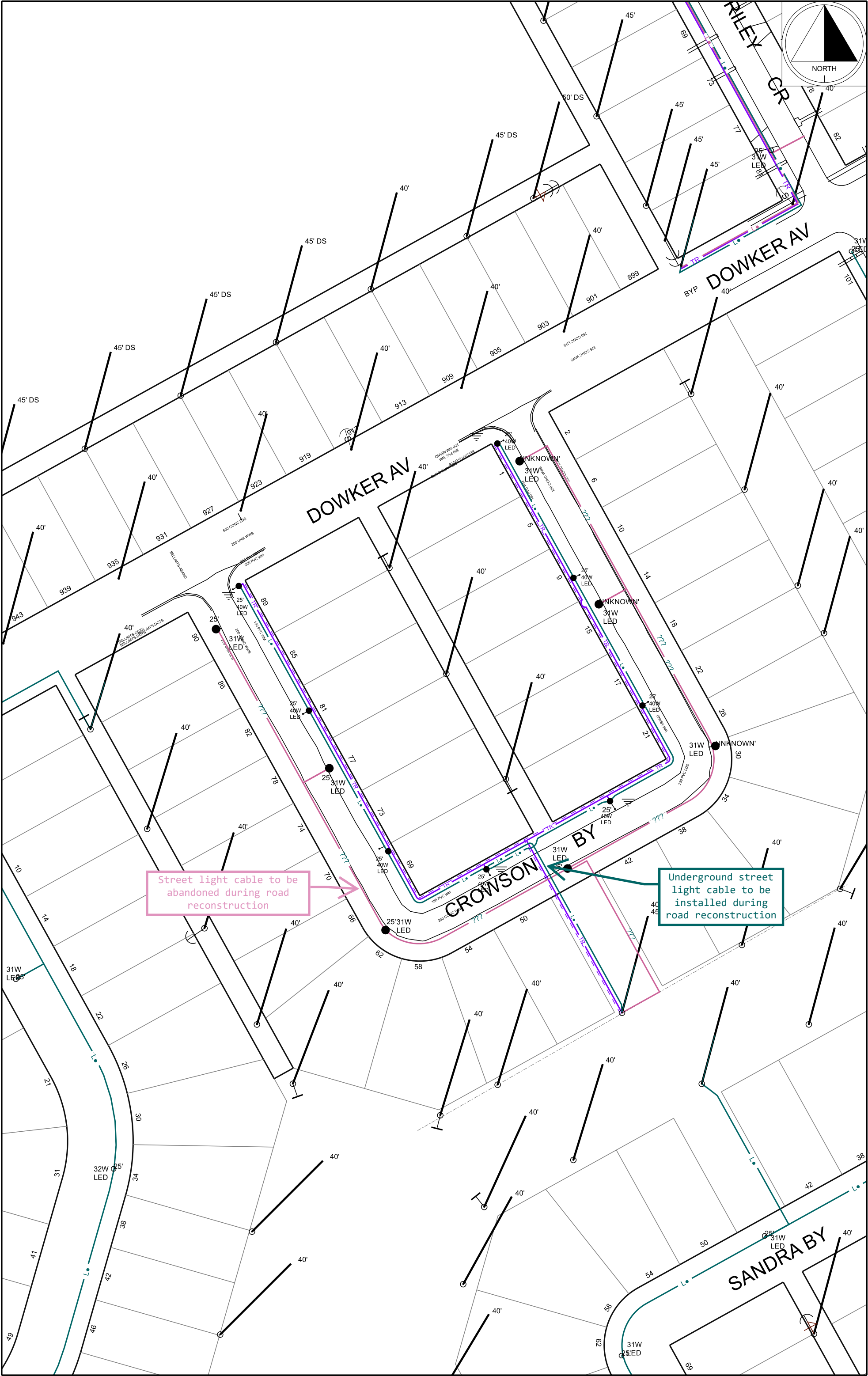
† See Clause 5.2.2 where these depths cannot be achieved.

‡ This depth of burial may be reduced where the underground supply cable transitions to an above-ground structure (e.g., a pole) within a distance as short as possible from the structure without exceeding 1.5 m.









Street light cable to be abandoned during road reconstruction

Underground street light cable to be installed during road reconstruction

